



**2024 DSHS Arbovirus Activity Report  
Week #35 (ending August 31, 2024)  
Report Date: September 4, 2024**

**Table 1. 2024 Arbovirus Activity Summary, Texas, Week 35**

Arbovirus	Mosquito Pools	Avian	Veterinary	Sentinel Chicken	Human					
					Febrile Illness	Neurologic Illness	Severe Dengue	TOTAL (HUMAN)	Deaths	PVD <sup>2</sup>
California Serogroup <sup>1</sup>								0		
Chikungunya					7			7		
Dengue					37		3	40	1	
Eastern Equine Encephalitis			2					0		
St. Louis Encephalitis	2							0		
West Nile	2747	28	4		21	25		46	6	72
Zika								0		
<b>TOTAL REPORTS</b>	<b>2749</b>	<b>28</b>	<b>6</b>	<b>0</b>	<b>65</b>	<b>25</b>	<b>3</b>	<b>93</b>	<b>7</b>	<b>72</b>

<sup>1</sup>California Serogroup includes California encephalitis, Jamestown Canyon, Keystone, La Crosse, snowshoe hare, and trivittatus viruses.

<sup>2</sup>PVD - Presumptive viremic blood donors are people who had no symptoms at the time of donating blood through a blood collection agency, but whose blood tested positive when screened for the presence of West Nile virus or Zika virus. Unless they meet the case reporting criteria, they are not counted as a case for official reporting purposes and are not included in the "Total (HUMAN)" column.

Note: Human mortality from arboviral conditions is aggregated and reported monthly once documentation has been received and verified.

For more detailed information about West Nile virus, including past weekly and annual reports, please visit <https://www.dshs.texas.gov/mosquito-borne-diseases/dshs-arbovirus-weekly-activity-reports>

For more detailed information about Zika, please visit <http://www.texaszika.org/>

Please note that arbovirus weekly reports are weekly snapshots of preliminary DSHS data and may change at any time due to quality assurance procedures. The final weekly report of each year is not complete data for the year and should not be used to draw conclusions regarding annual activity. Refer to our annual summary reports for finalized, complete data or contact [wv@dshtexas.gov](mailto:wv@dshtexas.gov) to request additional data or with any questions.

**Table 2. 2024 Aedes-Associated Arbovirus Activity by County†, Week 35**

County	CHIKV*		DENV*		ZIKV		
	M	H	M	H	M	H	PVD
Bexar		1		3			
Brazoria				1			
Collin		1		5			
Dallas		1		5			
Denton				3			
El Paso				2			
Fort Bend		3		3			
Hays				1			
Kaufman				1			
McMullen				1			
Montgomery				4			
Parker				1			
Tarrant				3			
Taylor				1			
Travis				4			
Victoria				1			
Williamson		1		1			
Total Number of Reports	0	7	0	40	0	0	0

M- mosquito H- human PVD- Presumptive viremic blood donors

CHIKV - Chikungunya Virus

DENV - Dengue Virus

ZIKV - Zika Virus

\*All reported cases are imported.

†County level data is not reported for conditions with <5 cases reported in a year.

**Table 3. 2024 Other Arbovirus Activity by County†, Week 35**

County	CAL		EEEV				SLEV			WNV								
	M	H	M	V	SC	H	M	SC	H	M	A	V	SC	H				
														WNF	WNND	PVD±	TOTAL	
Bell										38								0
Bexar										28				1	1	2	2	
Bowie										0					1		1	
Brazoria										6							0	
Brazos										16							0	
Burleson										1							0	
Collin										67					1	5	1	
Cooke										7				1			1	
Crosby										1							0	
Dallas										578		1		5		6	5	
Dallam										0						1	0	
Denton										71				1	2	2	3	
El Paso							2			2							0	
Ellis										37						2	0	
Floyd										1							0	
Fort Bend										22							0	
Galveston										1						1	0	
Grimes										2							0	
Harris										678	27			1	3	23	4	
Haskell										0		1					0	
Hays										6							0	
Hood										0						1	0	
Houston				2						0							0	
Hunt										15							0	
Jefferson										19						1	0	
Jim Wells										7						1	0	
Johnson										58						1	0	
Kaufman										3						1	0	
King										0	1						0	
Kleberg										1							0	

Leon										1							0
Lubbock										44						2	0
Lynn										0						1	0
McLennan										0		1		1		1	1
Midland										22				1		1	1
Montague										0				1			1
Montgomery										232				2	2	14	4
Nueces										8							0
Orange										14						1	0
Parker										0					1		1
Potter										1							0
Rockwall										3							0
San Patricio										1							0
Tarrant										595		1		3	11	3	14
Taylor										1							0
Terry										0					1		1
Travis										67				3		1	3
Webb										7							0
Wichita										38					2	1	2
Williamson										48				1			1
Total Number of Reports	0	0	0	2	0	0	2	0	0	2747	28	4	0	21	25	72	46

M - mosquito A-avian V-veterinary SC- sentinel chicken H- human WNF - West Nile Fever WNND - West Nile Neuroinvasive Disease

CAL - California Serogroup Viruses

EEEV - Eastern Equine Encephalitis Virus

SLEV - St. Louis Encephalitis Virus

WNV - West Nile Virus

†County level data is not reported for conditions with <5 cases reported in a year.

‡PVDs are not included in the "Total" column.

Figure 1. Texas Counties Reporting Arbovirus Activity, Week 35

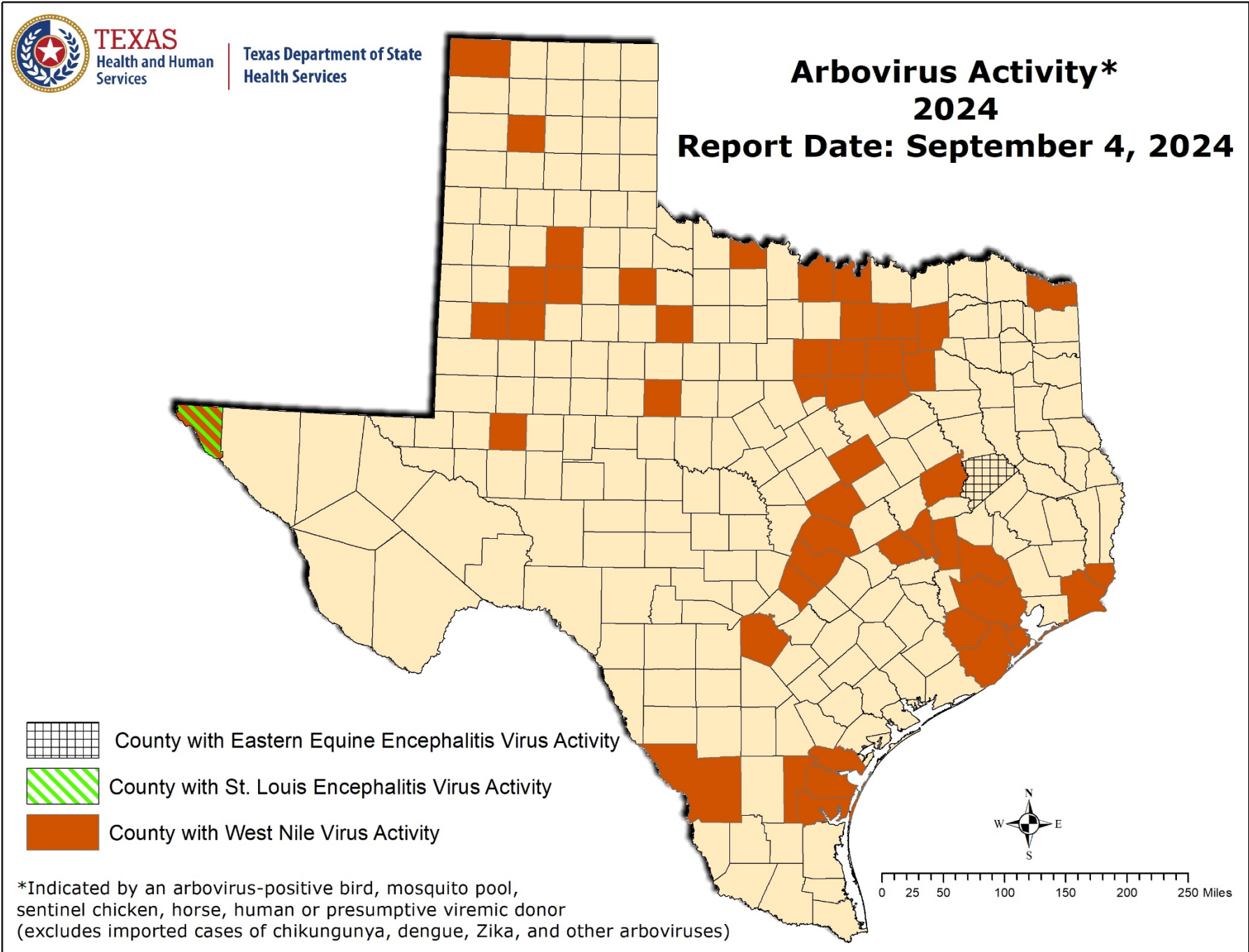
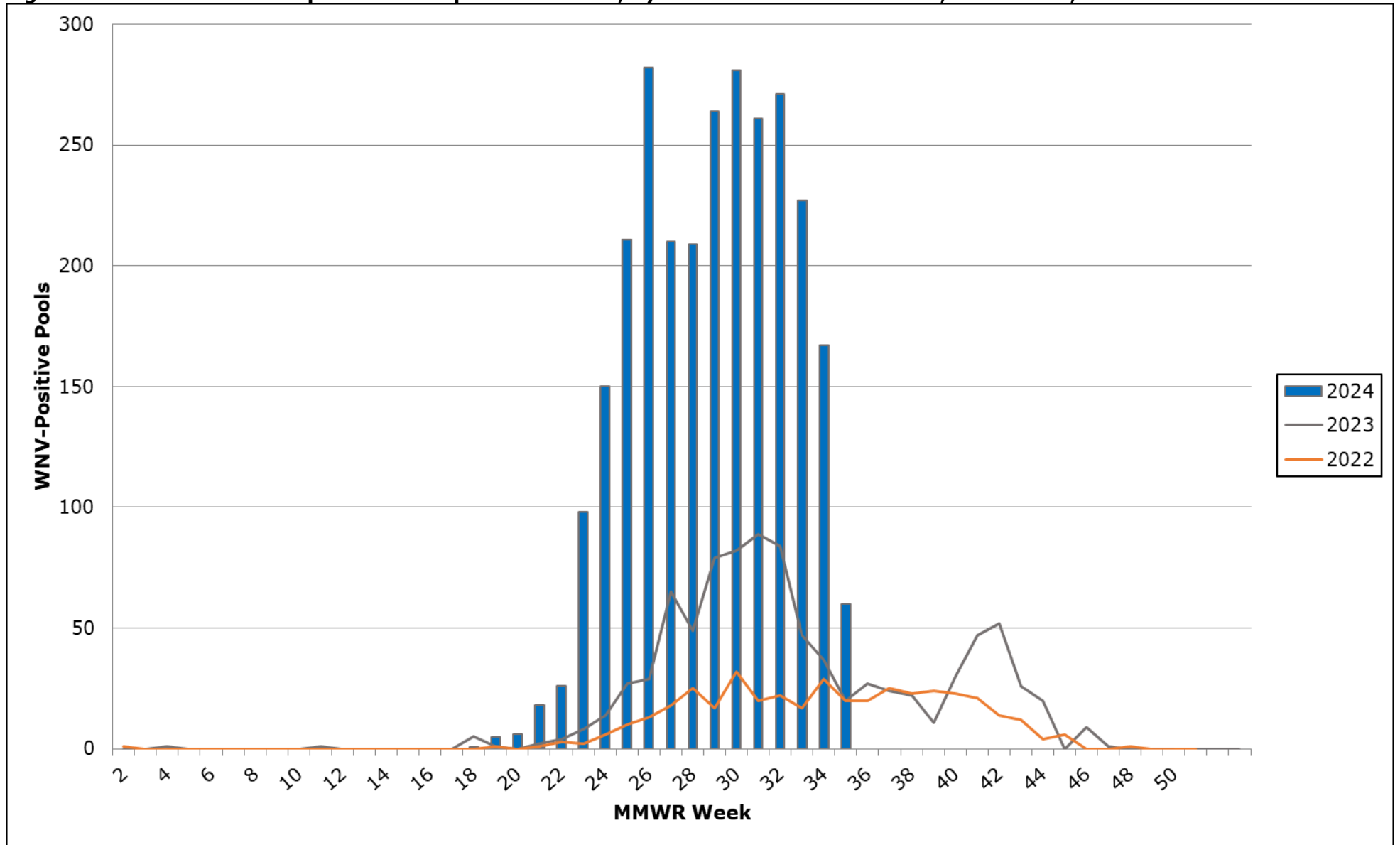


Figure 2. WNV-Positive Mosquito Pools Reported in Texas, by MMWR Week of Collection, 2022-2024, Week 35



**Figure 3. Human Cases of West Nile Virus Reported in Texas, by MMWR Week of Onset, 2022-2024, Week 35**

