

## Texas Influenza Surveillance Report 2015–2016 Season/2015 MMWR Week 52

(Dec. 27, 2015 – Jan. 02, 2016)

Report produced on 1/8/2016

### Summary

Influenza activity continues to be low in Texas, but it appears to be increasing. Compared to the previous week, the percentage of specimens positive for influenza and the percentage of patient visits due to influenza-like illness (ILI) slightly increased. No ILI/influenza-associated outbreaks or influenza-associated pediatric deaths were reported. In addition to flu, other respiratory viruses were detected in Texas during week 52.

Table 1: Summary of Texas Influenza (Flu) and Influenza-like Illness (ILI) Activity for the Current Week

Texas Surveillance Component	Change from Previous Week	Current Week	Previous Week†	Page of Report
Statewide influenza activity level reported to CDC (geographic spread of influenza)	No change	Local	Local	--
Statewide ILINet Activity Indicator assigned by CDC (intensity of influenza-like illness)	Increased	Moderate	Low	--
Percentage of specimens positive for influenza	▲ 0.28%	1.76%	1.48%†	1
Percentage of visits due to ILI (ILINet)	▲ 0.52%	7.22%	6.70%†	3
Number of regions reporting increased flu/ILI activity	▲ 3	4	1	5
Number of regions reporting decreased flu/ILI activity	▼ 2	0	2	5
Number of variant/novel influenza infections	No change	0	0	5
Number of ILI/influenza outbreaks	No change	0	0	5
Number of Pneumonia and Influenza (P&I) Deaths	▲ 335	335	0	5
Number of pediatric influenza deaths	No New Cases Reported	0	0	6

†Data displayed have been updated since last week's flu report with any new reports received.

### Laboratory Results

#### Influenza

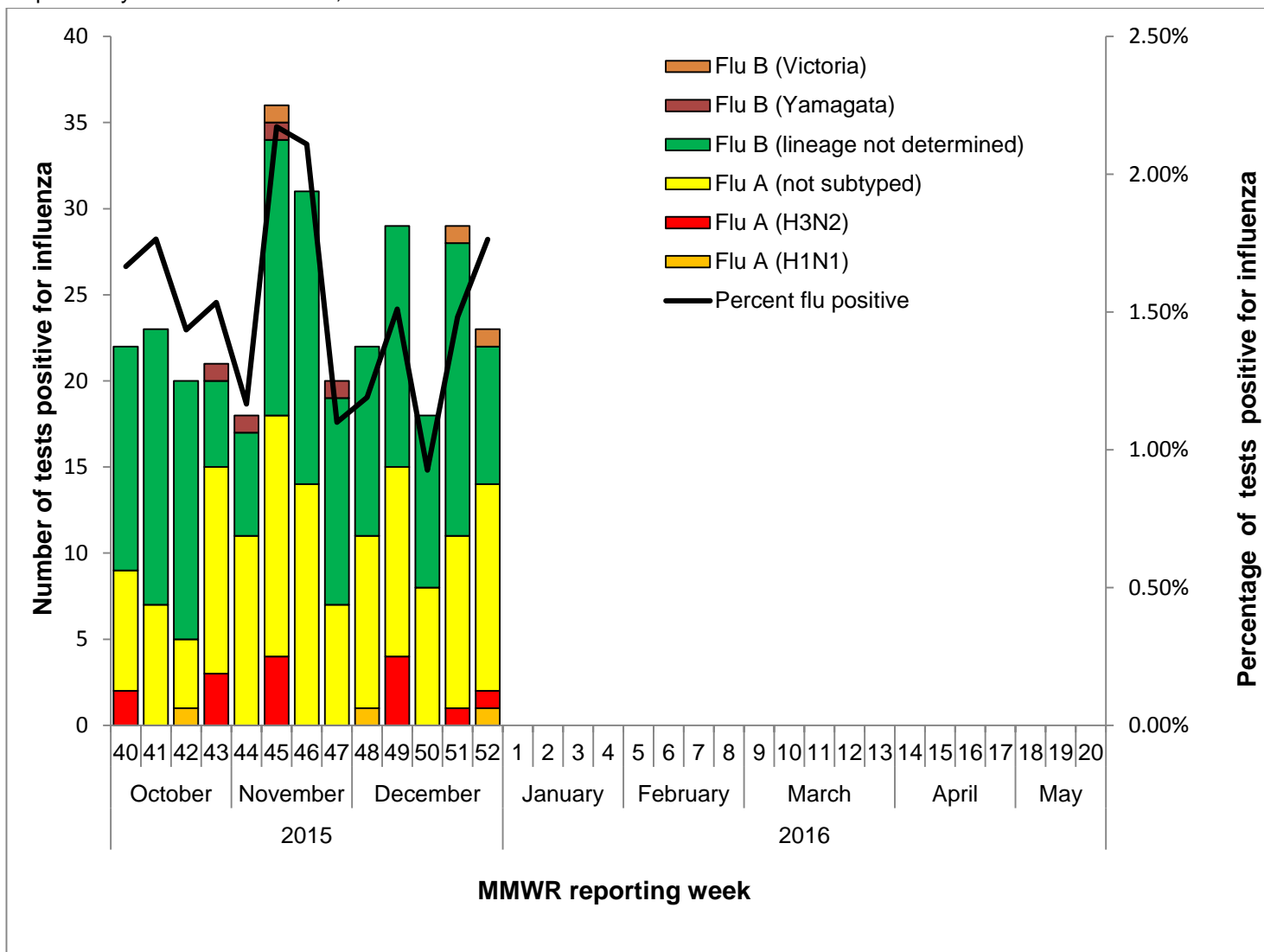
Hospital laboratories across Texas voluntarily report influenza tests (antigen, culture, and PCR) to the National Respiratory and Enteric Virus Surveillance System (NREVSS). Providers throughout Texas also submit specimens for influenza testing (PCR) to Texas public health laboratories, including the Texas Department of State Health Services (DSHS) laboratory in Austin and the nine Texas Laboratory Response Network (LRN) laboratories. The results reported by these labs are summarized below. Additional influenza test results (rapid tests, culture, PCR) were reported from providers and public health departments throughout the state (see county map at the end of this report).

Table 2: Influenza Testing Performed by Texas Laboratories for the Current Week

	Week 52	Season to Date
Number of labs reporting flu tests	15	
Number of specimens tested	1304	20846
Number of positive specimens (%)†	23 (1.76%)	312 (1.50%)
Percentage of total tests that were antigen detection tests	41.95%	
<b>Positive specimens by type/subtype/lineage [n (%)]</b>		
<b>Influenza A</b>	<b>14 (60.87%)</b>	<b>145 (46.47%)</b>
Subtyping performed	2 (14.29%)	18 (12.41%)
A (H1N1)	1 (50.00%)	3 (16.67%)
A (H3N2)	1 (50.00%)	15 (83.33%)
Subtyping not performed	12 (85.71%)	127 (87.59%)
<b>Influenza B</b>	<b>9 (39.13%)</b>	<b>167 (53.53%)</b>
Lineage testing performed	1 (11.11%)	7 (4.19%)
B/Victoria	1 (100.00%)	3 (42.86%)
B/Yamagata	0 (0.00%)	4 (57.14%)
Lineage testing not performed	8 (88.89%)	160 (95.81%)

†Laboratory data in 2015-2016 season reports may not be comparable to reports from previous seasons because of the inclusion of DSHS and LRN laboratory data for the current season.

Figure 1: Number and Percentage of Tests (Antigen, Culture, PCR) Positive for Influenza by Type, Subtype, and Lineage Reported by Texas Laboratories, 2015–2016 Season



**Other Respiratory Viruses**

The NREVSS system collects information on a variety of respiratory viruses in addition to influenza including parainfluenza virus, respiratory syncytial virus (RSV), rhinovirus, human metapneumovirus (HMPV), seasonal coronavirus, and respiratory adenovirus. The results for the current week are summarized below.

Table 3: Non-Influenza Respiratory Virus Testing Performed by Texas NREVSS Laboratories for the Current Week

Virus	Number of Laboratories Testing	Tests Performed	Positive Tests	Percentage of Tests Positive
Adenovirus (respiratory)	5	487	26	5.34%
HMPV	5	481	10	2.08%
Parainfluenza virus	5	482	19	3.94%
Rhinovirus	4	348	82	23.56%
RSV <sup>†^</sup>	12	1069	320	29.93%
Seasonal coronavirus (does not include MERS-CoV)	3	335	14	4.18%

<sup>†</sup>RSV tests displayed in the table are antigen detection tests only. Some non-NREVSS reporters also contribute to the RSV data.

<sup>^</sup>Numbers and percentage may differ from the weekly RSV report. The weekly RSV report may be accessed at <https://www.dshs.state.tx.us/RSV/disease/rsv-Data.aspx>.

### Antigenic Characterization

Since October 04, 2015, CDC has reported antigenic characterization results from three influenza A (H3N2) viruses and two influenza B viruses received from the Texas Department of State Health Services (DSHS) Laboratory. The DSHS Laboratory sends a representative sample of influenza viruses to the CDC throughout the flu season.

#### Influenza A (H3N2) [3]

- Three (100.0%) viruses were related to A/Switzerland/9715293/2013, the influenza A (H3N2) component of the 2015-2016 Northern Hemisphere influenza vaccine.

#### Influenza B [2]

- Yamagata lineage [2]: Two (100.0%) influenza B/Yamagata-lineage viruses have been characterized from Texas. A B/Phuket/3073/2013-like virus, which belongs to the B/Yamagata lineage, is included as an influenza B component of the 2015-2016 Northern Hemisphere trivalent and quadrivalent influenza vaccines.

### Antiviral Resistance

No antiviral resistance testing data for Texas specimens are available at this time.

## U.S. Outpatient Influenza-like Illness Surveillance Network (ILINet)

Table 4: Texas ILINet Reporting and Patient Visit Summary for the Current Week

Week 52	
Number of providers reporting <sup>†</sup>	109
Number of providers reporting patient visits	104
Number (%) of providers with at least one ILI case	85 (81.73%)
Percentage of all visits due to ILI	7.22%
Texas ILINet baseline <sup>‡</sup> , 2015–2016	6.32%

<sup>†</sup>Reporting providers include both ILINet and RVSP providers.

<sup>‡</sup>The baseline is the mean percentage of patient visits for ILI during non-influenza weeks for the previous three seasons plus two standard deviations. A “non-influenza week” is defined as a week that accounted for less than 2% of the season’s total number of specimens that tested positive for influenza.

Table 5: Percentage of Visits for Influenza-like Illness Reported by Texas ILINet Providers (as of 1/7/2016 9:30 AM)

Week	Providers Reporting	Number of ILI Cases by Age Group (Years)					Total ILI (all ages)	Total Patients	% ILI
		0-4	5-24	25-49	50-64	65+			
201540	131	204	395	350	197	125	1271	31446	4.04%
201541	127	212	422	304	141	92	1171	29680	3.95%
201542	127	245	467	392	187	137	1428	31123	4.59%
201543	129	250	500	352	201	150	1453	31953	4.55%
201544	131	251	437	322	213	160	1383	31979	4.32%
201545	122	248	485	295	122	41	1191	27662	4.31%
201546	127	237	507	376	224	186	1530	30247	5.06%
201547	126	206	374	339	182	114	1215	22025	5.52%
201548	125	274	476	478	290	249	1767	29550	5.98%
201549	122	270	444	409	300	218	1641	27053	6.07%
201550	118	306	399	484	279	217	1685	25414	6.63%
201551	114	172	326	415	220	175	1308	19514	6.70%
201552	109	200	284	480	294	173	1431	19831	7.22%

Figure 2: Percentage of Visits Due to Influenza-like Illness Reported by Texas ILINet Participants, 2015–2016 Season

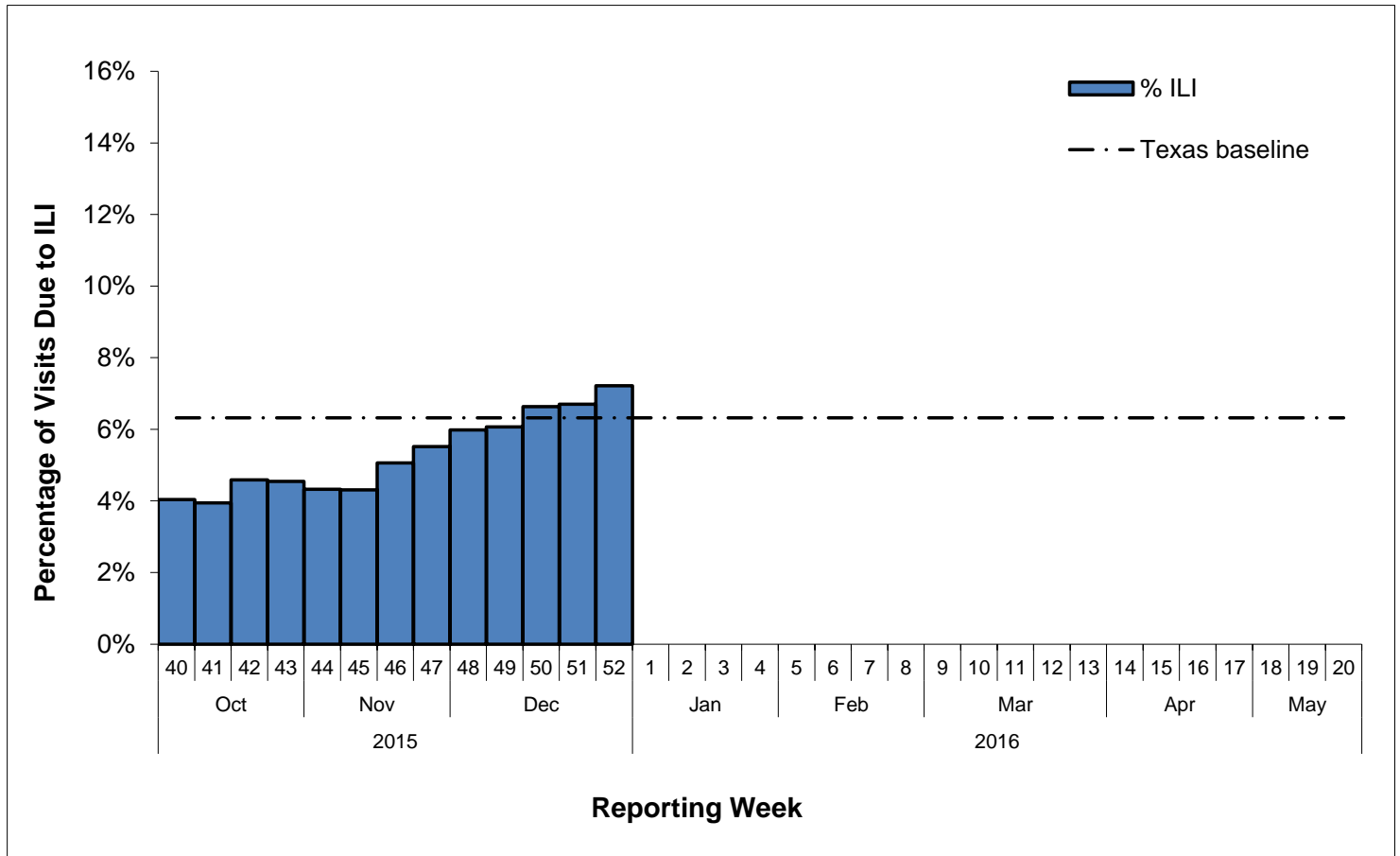
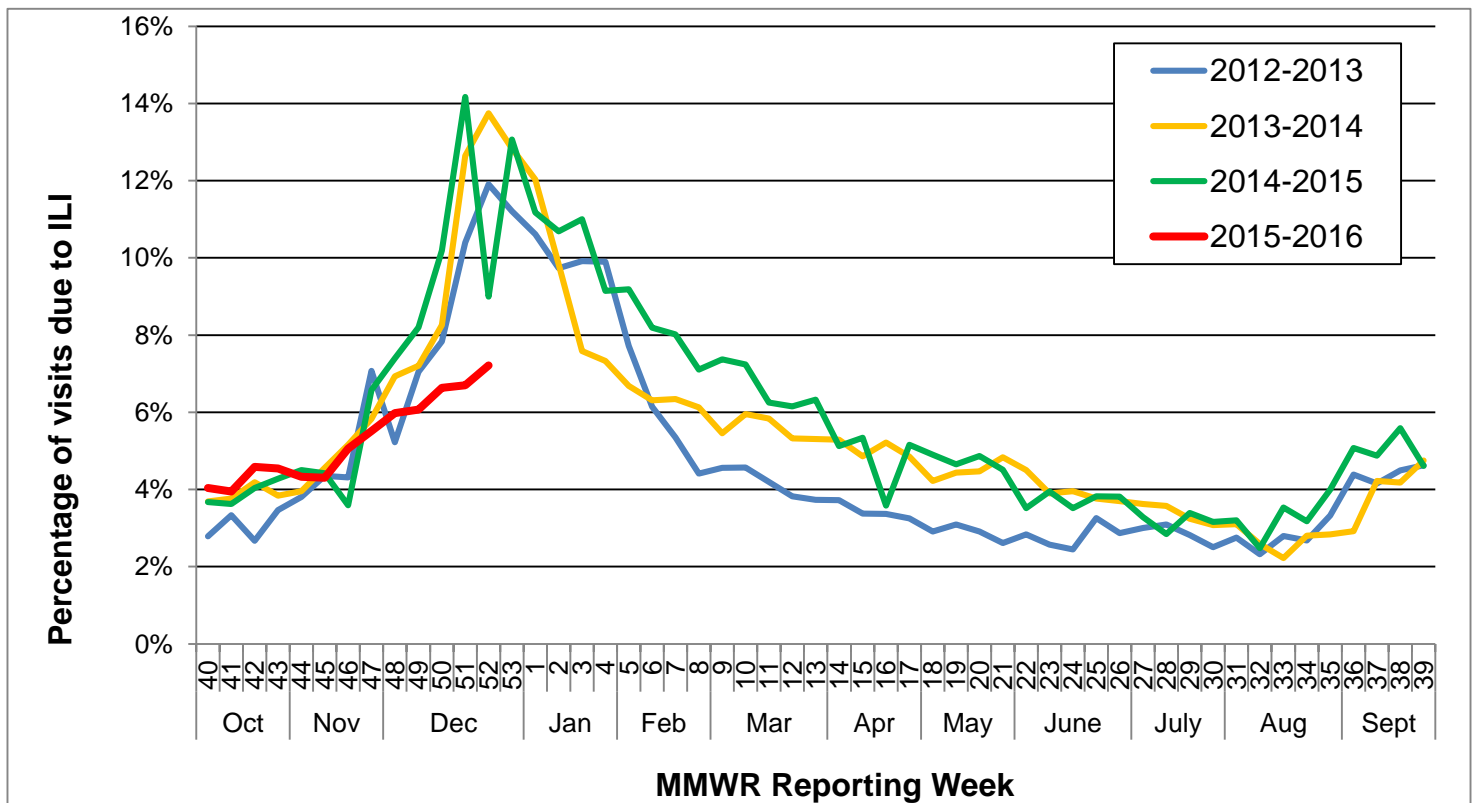


Figure 3: Percentage of Visits Due to Influenza-like Illness Reported by Texas ILINet Participants, 2012–2016 Seasons



## Reports from Health Service Regions

Reports were received from all Health Service Regions (HSRs) during week 52.

Table 6: Influenza Activity Compared to Week 51 by Health Service Region (HSR)

Influenza Activity Comparison	Health Service Region (HSR)
Increased	1, 2/3, 4/5N, and 9/10
Same	6/5S, 7, 8, and 11
Decreased	
Unsure	

## Variant Influenza Viruses

No variant or novel influenza viruses have been detected in Texas in 2015 or 2016.

## Institutional Outbreaks and School Closures

No ILI or influenza-associated outbreaks were reported during week 52.

No school closures were reported during week 52.

## TX P&I Mortality Surveillance Data

Pneumonia and influenza (P&I) deaths are attained from death certificates of Texas residents whose underlying or contributing cause(s) of death on the death certificate is reported as pneumonia or influenza. P&I deaths are identified based on ICD-10 multiple cause of death codes. In particular, P&I deaths are based on ICD-10 pneumonia and influenza mortality codes.

One thousand three hundred twenty-eight P&I deaths have been reported in Texas during the 2015-2016 influenza season.

Table 7: Texas P&I Deaths Occurring Oct. 04-Jan. 06, 2016\* by Age

Age Category (years)	Number of P&I Deaths <sup>+</sup>	Mortality Rate (per 100,000)
0 - 4	<10	0.05
5 - 17	0	0.00
18 - 49	68	0.54
50 - 64	215	4.33
65 +	1041	30.93
Overall	1325	4.69

\*NOTE: Data are provisional and subject to change, errors, and duplicates

<sup>+</sup> If the cell count is less than 10, the number of P&I deaths is suppressed and <10 is written in the cell.

Table 8: Texas P&I Deaths Occurring Oct. 04-Jan. 06, 2016\* by Health Service Region (HSR)

HSR	Number of P&I Deaths	Mortality Rate (per 100,000)
1	64	7.11
2/3	372	4.56
4/5N	89	5.60
6/5S	290	3.94
7	164	4.81
8	142	4.86
9/10	88	5.75
11	119	5.02
Overall	1328	4.70

\*NOTE: Data are provisional and subject to change, errors, and duplicates

## Influenza-Associated Pediatric Mortality

No influenza-associated pediatric deaths were reported during week 52.

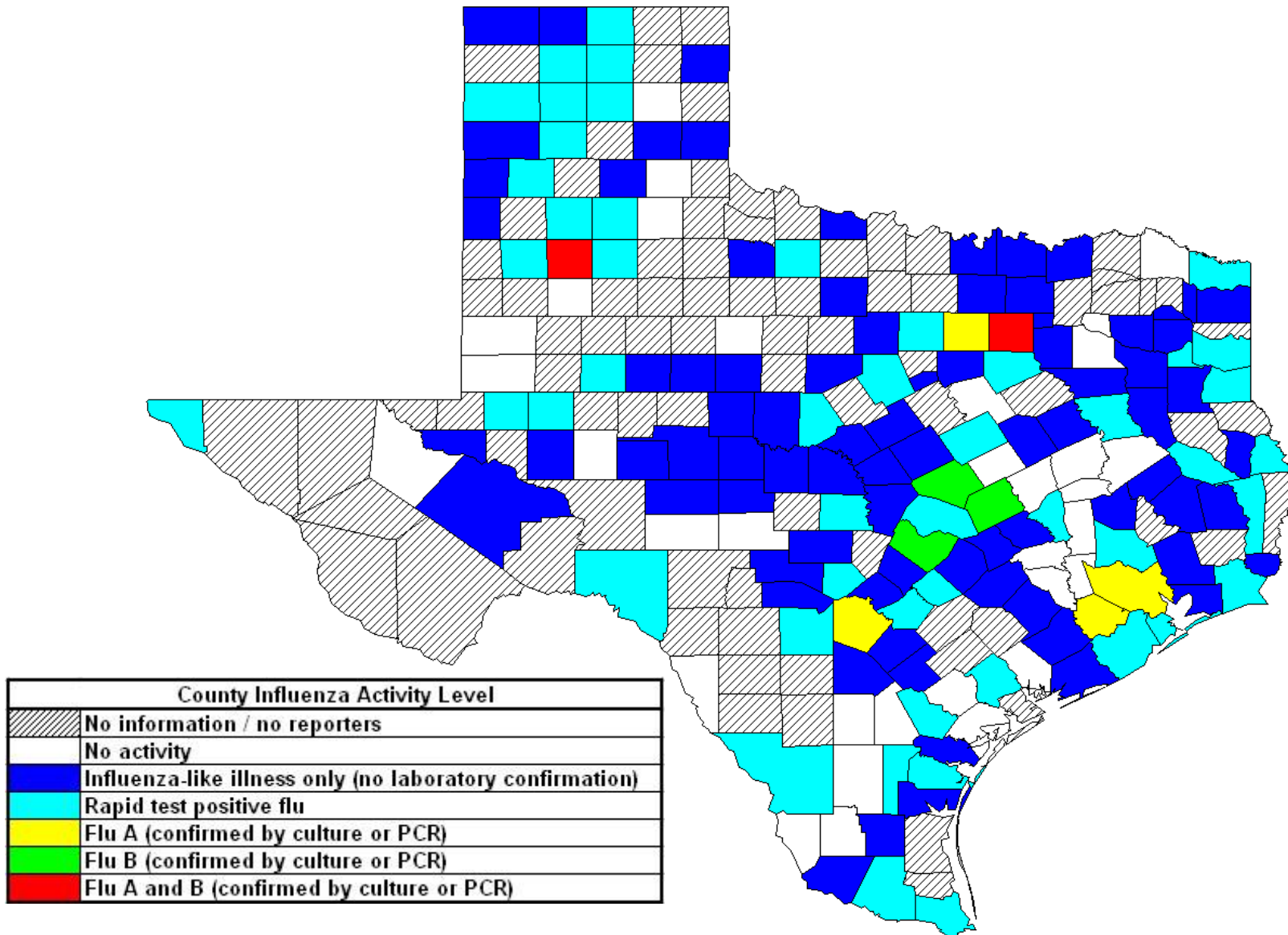
No influenza-associated pediatric deaths have been reported in Texas during the 2015-2016 influenza season. Cases of influenza-associated pediatric mortality (children <18 years of age) are reportable year-round and by law in Texas.

Table 9: Influenza-Associated Pediatric Deaths Reported in Texas during the 2015–2016 Season

Month of Pediatric Death	Influenza A (H1N1)	Influenza A (H3N2)	Influenza A (Not Subtyped)	Influenza B	Influenza, Not Typed / Not Differentiated	Influenza virus co-infection: A (not subtyped) and B	Total, All Influenza Types / Subtypes
<b>2015</b>							
October	0	0	0	0	0	0	0
November	0	0	0	0	0	0	0
December	0	0	0	0	0	0	0
<b>2016</b>							
January	0	0	0	0	0	0	0
<b>Total</b>	<b>0</b>	<b>0</b>	<b>0</b>	<b>0</b>	<b>0</b>	<b>0</b>	<b>0</b>

## Statewide Influenza Activity Map

Figure 4: Texas Map Displaying the Highest Level of Influenza or ILI Activity Reported by County for the Week Ending Jan. 02, 2016 (MMWR Week 52)



Please note: The majority of influenza cases are not reportable by law in Texas. This map contains data from sentinel sites and only displays influenza and ILI cases that were reported to public health. Positive laboratory results are reported according to specimen collection date, or date received in the laboratory if the former is unknown.



## Texas Influenza Surveillance Components and Measures

Activity codes (see <http://www.cdc.gov/flu/weekly/overview.htm>)

Statewide influenza activity level

A code reported weekly by states and territories to CDC indicating the geographic spread of influenza in the state. Levels are no activity, sporadic, local, regional, and widespread.

ILINet Activity Indicator

A statewide level of influenza-like illness intensity (on a scale of 1-10, with 1 being the lowest level) assigned to each state weekly by CDC based on data reported through ILINet.

### Morbidity

Novel/variant influenza

Thorough investigations are performed on all cases of novel/variant influenza. *This condition is reportable by law in Texas.*

Texas ILINet

Providers voluntarily report weekly to CDC's ILINet system on the number of outpatient visits for ILI and total outpatient visits. Providers may submit up to 5 specimens per month for influenza testing. **See <http://www.dshs.state.tx.us/idcu/disease/influenza/surveillance/ILINet/> for information on how to become an ILINet provider.**

Respiratory Virus Surveillance Project (RVSP)

Providers report weekly to ILINet and submit specimens on the first 10 patients seen with ILI each week. Specimens are tested for a variety of respiratory viruses.

ILI activity

Non-ILINet providers report ILI or influenza data weekly to local or regional health departments.

Outbreaks

Healthcare, schools, and childcare facilities report ILI and influenza outbreaks to health departments in Texas. *This condition is reportable by law in Texas.*

### Mortality

Pneumonia and Influenza (P&I) Mortality Surveillance

The DSHS Vital Statistics Unit collects death certificate information for all deaths on Texas residents from various partners such as funeral homes and local registrars around the state. The death certificates are then sent to the National Center for Health Statistics (NCHS) where the cause of death and underlying causes of death on the death certificates are coded with ICD-10 mortality codes. Once death certificates are coded, the information is sent back to DSHS Center for Health Statistics (CHS). CHS produces a Weekly Pneumonia and Influenza (P&I) Death Report and sends it to the State Influenza Surveillance Coordinator for inclusion in the Texas Weekly Flu Report. P&I deaths are identified based on ICD-10 multiple cause of death codes, and in particular, pneumonia and influenza mortality codes. Delays inherent in death reporting and coding practices may cause the number of reported P&I deaths to vary considerably each week.

Influenza-associated pediatric deaths

Deaths that are associated with influenza in children < 18 years of age are reported to health departments in Texas. *This condition is reportable by law in Texas.* <http://www.dshs.state.tx.us/idcu/disease/IAPM/>

### Laboratory

DSHS Austin laboratory

Providers voluntarily submit specimens to the DSHS Austin laboratory for influenza PCR testing throughout the season. Providers sign up for this program through their local health departments.

Laboratory Response Network (LRN) laboratories

Providers voluntarily submit specimens to one of the 9 Texas LRNs for influenza PCR testing throughout the season. Providers sign up for this program through their local health departments.

NREVSS

Laboratories voluntarily report influenza and other respiratory virus data weekly through the CDC's online NREVSS reporting system. **Laboratories sign up for this program by contacting DSHS.** <http://www.cdc.gov/surveillance/nrevss/>

### **Recommended Resources**

*Texas Department of State Health Services*

DSHS influenza page: <http://www.texasflu.org/>

Influenza surveillance data and reports: <http://www.dshs.state.tx.us/idcu/disease/influenza/surveillance/>

Map of Texas Health Service Regions: <http://www.dshs.state.tx.us/regions/state.shtm>

*Centers for Disease Control and Prevention*

National FluView weekly flu report: <http://www.cdc.gov/flu/weekly/>

Variant and novel influenza viruses: <http://www.cdc.gov/flu/avianflu/index.htm>; <http://www.cdc.gov/flu/swineflu/index.htm>

Infection Control in Healthcare Facilities: <http://www.cdc.gov/flu/professionals/infectioncontrol/>

Seasonal Flu Information for Schools and Childcare Providers: <http://www.cdc.gov/flu/school/index.htm>

*World Health Organization*

Influenza page: <http://www.who.int/topics/influenza/en/>

Disease Outbreak News: <http://www.who.int/csr/don/en/>