



Texas Influenza Surveillance Summer Report 2017–2018 Season/2018 MMWR Week 22

(May 27, 2018 – June 2, 2018)
Report produced on 6/07/2018

Summary

Influenza activity remains low across the state of Texas. It appears that influenza activity peaked in late January. Compared to the previous week, the percentage of patient visits due to influenza-like illness (ILI) slightly increased. The percentage of specimens testing positive for influenza reported by hospital laboratories marginally decreased. No influenza-associated pediatric deaths were reported. One influenza-associated outbreak was reported. In addition to flu, other respiratory viruses—especially rhinovirus/enterovirus—were detected in Texas during week 22.

Table 1: Summary of Texas Influenza (Flu) and Influenza-like Illness (ILI) Activity for the Current Week

Texas Surveillance Component	Change from Previous Week	Current Week	Previous Week [†]	Page of Report
Statewide influenza activity level reported to CDC (geographic spread of influenza)	Not determined during the summer	N/A	N/A	--
Statewide ILINet Activity Indicator assigned by CDC (intensity of influenza-like illness)	Not determined during the summer	N/A	N/A	--
Percentage of specimens positive for influenza by hospital laboratories	▼0.10%	0.78%	0.88%	1
Percentage of specimens positive for influenza by public health laboratories	No change	14.29%	14.29%	2
Percentage of visits due to ILI (ILINet)	▲0.04%	2.70%	2.66%	2
Number of regions reporting increased flu/ILI activity	No change	0	0	4
Number of regions reporting decreased flu/ILI activity	▼2	5	7	4
Number of variant/novel influenza infections	No cases reported	0	0	4
Number of ILI/influenza outbreaks	▲1	1	0	4
Number of pediatric influenza deaths	No new cases reported	0	0	5

[†]Data displayed have been updated since last week's flu report with any new reports received.

Laboratory Results

Influenza

Hospital laboratories across Texas voluntarily report influenza tests (antigen, culture, and PCR) to the National Respiratory and Enteric Virus Surveillance System (NREVSS). Providers throughout Texas also submit specimens for influenza testing (PCR) to Texas public health laboratories, including the Texas Department of State Health Services (DSHS) state laboratory in Austin and the nine Texas Laboratory Response Network (LRN) laboratories. The results reported by Texas NREVSS participants and public health laboratories for the current week are summarized in the two tables below. Additional influenza test results (rapid tests, culture, PCR) and ILI activity were reported from providers and public health departments throughout the state (see county map at the end of this report).

Table 2: Influenza Testing Performed by Texas Hospital Laboratories for the Current Week

	Week 22	Season to Date Week Ending: June 2, 2018
Number of labs reporting flu tests	6	
Number of specimens tested	129	151877
Number of positive specimens (%) [†]	1 (0.78%)	34666 (22.83%)
Percentage of total tests that were antigen detection tests	20.16%	
Positive specimens by type/subtype [n (%)]		
Influenza A	0 (0.00%)	22852 (65.92%)
Subtyping performed	0 (0.00%)	3354 (14.68%)
A (H1N1)	0 (0.00%)	446 (13.30%)
A (H3N2)	0 (0.00%)	2908 (86.70%)
Subtyping not performed	0 (0.00%)	19498 (85.32%)
Influenza B	1 (100.00%)	11814 (34.08%)

[†]Laboratory data in 2016-2017 and 2017-2018 season reports may not be comparable to reports from seasons previous to 2016-2017 because the data only includes hospital laboratories data for the current season.

Table 3: Influenza Testing Performed by Texas Public Health Laboratories for the Current Week

	Week 22	Season to Date Week Ending: June 2, 2018
Number of labs reporting flu tests	3	
Number of specimens tested	14	2702
Number of positive specimens (%) [†]	2 (14.29%)	1574 (58.25%)
,Positive specimens by type/subtype/lineage [n (%)]		
Influenza A	0 (0.00%)	1121 (71.22%)
Subtyping performed	0 (0.00%)	1106 (98.66%)
A (H1N1)	0 (0.00%)	290 (26.22%)
A (H3N2)	1 (0.00%)	816 (73.78%)
Subtyping not performed	0 (0.00%)	15 (1.34%)
Influenza B	2 (100.00%)	449 (28.53%)
Lineage testing performed	2 (100.00%)	345 (76.84%)
B/Victoria	1 (50.00%)	32 (9.28%)
B/Yamagata	1 (50.00%)	313 (90.72%)
Lineage testing not performed	0 (0.00%)	104 (23.16%)
Other*	0 (0.00%)	4 (0.25%)

[†]Laboratory data in 2016-2017 and 2017-2018 season reports may not be comparable to reports from seasons previous to 2016-2017 because the data only includes hospital laboratories data for the current season

*Other denotes specimens with coinfections (i.e. one specimen was positive for both influenza A (H1N1) and influenza A (H3N2))

Other Respiratory Viruses

The NREVSS system collects information on a variety of respiratory viruses in addition to influenza including parainfluenza virus, respiratory syncytial virus (RSV), rhinovirus, human metapneumovirus (HMPV), seasonal coronavirus, and respiratory adenovirus. The results for the current week are summarized below.

Table 4: Non-Influenza Respiratory Virus Testing Performed by Texas NREVSS Laboratories for the Current Week

Virus	Number of Laboratories Testing	Tests Performed	Positive Tests	Percentage of Tests Positive
Adenovirus (respiratory)	4	102	9	8.82%
HMPV	4	102	2	1.96%
Parainfluenza virus	4	102	13	12.75%
Rhinovirus	4	102	33	32.35%
RSV ^{†^}	6	117	4	3.42%
Seasonal coronavirus (does not include MERS-CoV)	1	42	1	2.38%

[†]RSV tests displayed in the table are a combination of antigen detection, PCR, and culture tests. Some non-NREVSS reporters also contribute to the RSV data.

[^]Numbers and percentage may differ from the weekly RSV report. The weekly RSV report may be accessed at <https://www.dshs.state.tx.us/RSV/disease/rsv-Data.aspx>.

U.S. Outpatient Influenza-like Illness Surveillance Network (ILINet)

Table 5: Texas ILINet Reporting and Patient Visit Summary for the Current Week

	Week 22
Number of providers reporting [†]	73
Number of providers reporting patient visits	72
Number (%) of providers with at least one ILI case	46 (63.89%)
Percentage of all visits due to ILI	2.70%
Texas ILINet baseline [‡] , 2017-2018	6.41%

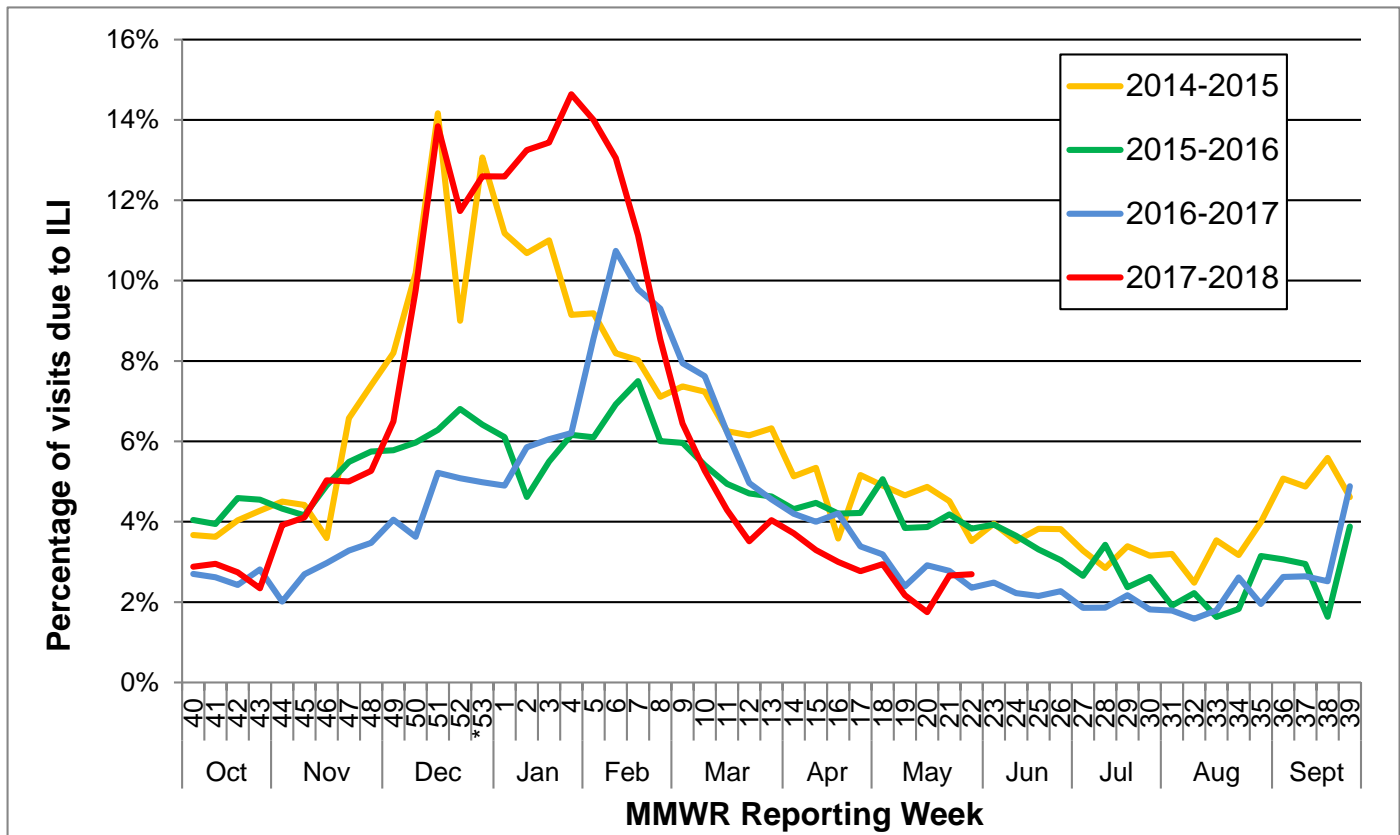
[†]Reporting providers include both ILINet and RVSP providers.

[‡]The baseline is the mean percentage of patient visits for ILI during non-influenza weeks for the previous three seasons plus two standard deviations. A "non-influenza week" is defined as a week that accounted for less than 2% of the season's total number of specimens that tested positive for influenza

Table 6: Percentage of Visits for Influenza-like Illness Reported by Texas ILINet Providers (as of 6/7/2018 10:05 AM)

Week	Providers Reporting	Number of ILI Cases by Age Group (Years)					Total ILI (all ages)	Total Patients	ILI
		0-4	5-24	25-49	50-64	65+			
201740	116	165	327	166	120	140	918	31871	2.88%
201741	118	171	286	186	130	155	928	31433	2.95%
201742	115	153	282	188	114	127	864	31527	2.74%
201743	111	188	297	138	61	26	710	30309	2.34%
201744	81	206	386	156	117	147	1012	25857	3.91%
201745	114	224	504	292	166	131	1317	32080	4.11%
201746	115	292	627	366	179	192	1656	32907	5.03%
201747	116	230	390	309	143	108	1180	23582	5.00%
201748	112	298	577	423	169	74	1541	29259	5.27%
201749	116	341	692	443	279	250	2005	30858	6.50%
201750	115	391	1268	803	368	260	3090	31664	9.76%
201751	111	409	1603	1267	636	401	4316	31182	13.84%
201752	73	348	546	576	358	263	2091	17823	11.73%
201801	108	309	918	1333	605	263	3428	27226	12.59%
201802	112	309	1332	1552	786	428	4407	33264	13.25%
201803	115	359	1571	1319	650	397	4296	31975	13.44%
201804	115	466	2407	1504	732	381	5490	37505	14.64%
201805	114	432	2581	1314	625	334	5286	37768	14.00%
201806	115	419	2187	1186	611	355	4758	36464	13.05%
201807	114	318	1758	983	497	307	3863	34714	11.13%
201808	114	252	1190	778	388	262	2870	33607	8.54%
201809	111	195	808	539	318	208	2068	32101	6.44%
201810	108	200	501	408	216	175	1500	28468	5.27%
201811	107	146	258	309	148	141	1002	23342	4.29%
201812	109	131	332	253	168	156	1040	29586	3.52%
201813	106	143	303	233	145	121	945	23395	4.04%
201814	92	116	230	133	100	155	734	19779	3.71%
201815	89	89	200	113	98	145	645	19569	3.30%
201816	107	141	278	226	119	129	893	29756	3.00%
201817	106	130	249	176	116	131	802	28972	2.77%
201818	102	102	238	193	109	135	777	26396	2.94%
201819	95	120	210	116	40	23	509	23432	2.17%
201820	74	86	105	50	19	19	279	15942	1.75%
201821	75	90	125	65	72	101	453	17019	2.66%
201822	73	63	104	62	59	84	372	13803	2.70%

Figure 1: Percentage of Visits Due to Influenza-like Illness Reported by Texas ILINet Participants, 2014–2018 Seasons*



*There was a week 53 in the 2014-2015 influenza season, but there is not a week 53 for the 2017-2018 influenza season or the other previous seasons; therefore, the week 53 data point for those seasons is an average of week 52 and 1.

Reports from Health Service Regions

Reports were received from six Health Service Regions (HSRs) during week 22.

Table 7: Influenza Activity Compared to week 21 by Health Service Region (HSR)

Influenza Activity Comparison	Health Service Region (HSR)
Increased	
Same	8
Decreased	1, 2/3, 4/5N, 7, and 11
Unsure	

Variant Influenza Viruses

No variant or novel influenza viruses have been detected in Texas during the 2017-2018 season.

Institutional Outbreaks and School Closures

One influenza-associated outbreak was reported at a school in HSR 2/3 during week 22. Six students reported symptoms of ILI. Control measures included sending children with symptoms home.

P&I Mortality Surveillance Data

Pneumonia and influenza (P&I) death data are obtained from death certificates of Texas residents whose underlying or contributing cause(s) of death is reported as pneumonia or influenza. P&I deaths are identified based on ICD-10 multiple cause of death codes. In particular, P&I deaths are based on ICD-10 pneumonia and influenza mortality codes.

Eight thousand eight hundred and thirty-one P&I deaths have been reported in Texas during the 2017-2018 influenza season.

Table 8: Texas P&I Deaths Occurring Oct. 01, 2017- June 06, 2018* by Age

Age Category (years)	Number of P&I Deaths ⁺	Mortality Rate (per 100,000)
0 - 4	39	1.85
5 - 17	21	0.38
18 - 49	517	3.98
50 - 64	1455	28.44
65 +	6799	185.20
Overall	8831	30.07

*NOTE: Data are provisional and subject to change, errors, and duplicates

⁺ If the cell count is less than 10, the number of P&I deaths is suppressed and <10 is written in the cell.

Table 9: Texas P&I Deaths Occurring Oct. 01, 2017- June 06, 2018* by Health Service Region (HSR)

HSR	Number of P&I Deaths	Mortality Rate (per 100,000)
1	362	39.32
2/3	2564	30.19
4/5N	659	40.63
6/5S	1982	25.83
7	1074	29.99
8	1014	33.42
9/10	460	29.19
11	715	29.01
Unknown	<10	N/A
Overall	8831	30.07

*NOTE: Data are provisional and subject to change, errors, and duplicates

Influenza-Associated Pediatric Mortality

No influenza-associated pediatric deaths were reported week 22.

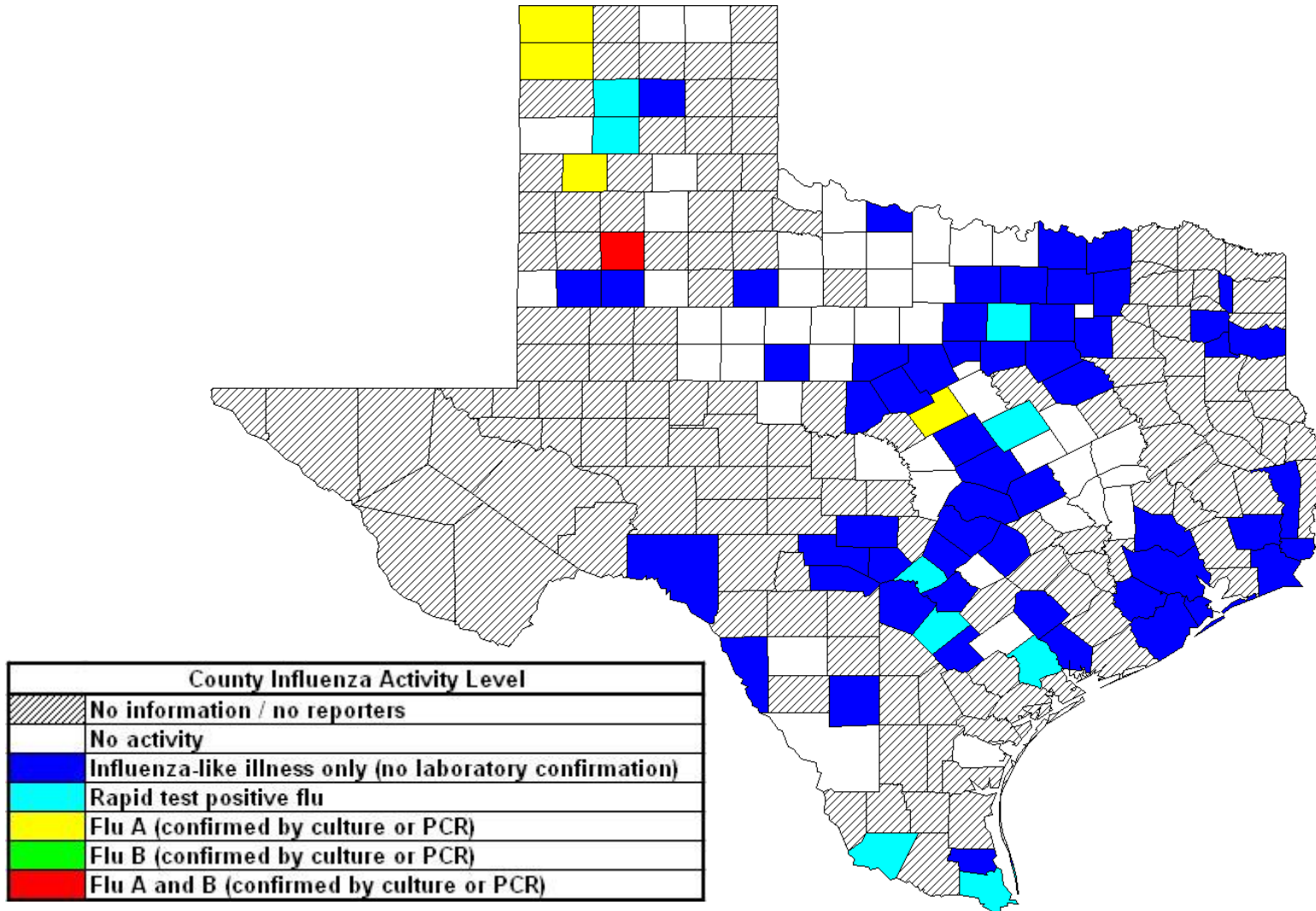
Fifteen influenza-associated pediatric death has been reported in Texas during the 2017-2018 influenza season. Cases of influenza-associated pediatric mortality (children <18 years of age) are reportable year-round and by law in Texas.

Table 10: Influenza-Associated Pediatric Deaths Reported in Texas during the 2017–2018 Season

Month of Pediatric Death	Influenza A (H1N1)	Influenza A (H3N2)	Influenza A (Not Subtyped)	Influenza B	Influenza, Not Typed / Not Differentiated	Influenza virus co-infection: A (not subtyped) and B	Total, All Influenza Types / Subtypes
2017							
October	0	0	0	0	0	0	0
November	0	1	1	0	0	0	2
December	1	1	1	0	0	0	3
2018							
January	0	1	0	0	0	0	1
February	0	1	0	5	0	0	6
March	1	1	0	1	0	0	3
April	0	0	0	0	0	0	0
May	0	0	0	0	0	0	0
June	0	0	0	0	0	0	0
Total	2	5	2	6	0	0	15

Statewide Influenza Activity Map

Figure 2: Texas Map Displaying the Highest Level of Influenza or ILI Activity Reported by County for the Week Ending June 2, 2018 (MMWR Week 22)



Please note: The majority of influenza cases are not reportable by law in Texas. This map contains data from sentinel sites and only displays influenza and ILI cases that were reported to public health. Positive laboratory results are reported according to specimen collection date, or date received in the laboratory if the former is unknown.

Texas Influenza Surveillance Components and Measures

Activity codes (see <http://www.cdc.gov/flu/weekly/overview.htm>)

Statewide influenza activity level

A code reported weekly by states and territories to CDC indicating the geographic spread of influenza in the state. Levels are no activity, sporadic, local, regional, and widespread.

ILINet Activity Indicator

A statewide level of influenza-like illness intensity (on a scale of 1-10, with 1 being the lowest level) assigned to each state weekly by CDC based on data reported through ILINet.

Morbidity

Novel/variant influenza

Thorough investigations are performed on all cases of novel/variant influenza. *This condition is reportable by law in Texas.*

Texas ILINet

Providers voluntarily report weekly to CDC's ILINet system on the number of outpatient visits for ILI and total outpatient visits. Providers may submit up to 5 specimens per month for influenza testing. See <http://www.dshs.state.tx.us/idcu/disease/influenza/surveillance/ILINet/> for information on how to become an ILINet provider.

ILI activity

Non-ILINet providers report ILI or influenza data weekly to local or regional health departments.

Outbreaks

Healthcare, schools, childcare, and correctional facilities report ILI and influenza outbreaks to health departments in Texas. *This condition is reportable by law in Texas.*

Mortality

Pneumonia and Influenza (P&I) Mortality Surveillance

The DSHS Vital Statistics Unit collects death certificate information for all deaths on Texas residents from various partners such as funeral homes and local registrars around the state. The death certificates are then sent to the National Center for Health Statistics (NCHS) where the cause of death and underlying causes of death on the death certificates are coded with ICD-10 mortality codes. Once death certificates are coded, the information is sent back to DSHS Center for Health Statistics (CHS). CHS produces a Weekly Pneumonia and Influenza (P&I) Death Report and sends it to the State Influenza Surveillance Coordinator for inclusion in the Texas Weekly Flu Report. P&I deaths are identified based on ICD-10 multiple cause of death codes, and in particular, pneumonia and influenza mortality codes. Delays inherent in death reporting and coding practices may cause the number of reported P&I deaths to vary considerably each week.

Influenza-associated pediatric deaths

Deaths that are associated with influenza in children < 18 years of age are reported to health departments in Texas. *This condition is reportable by law in Texas.* <http://www.dshs.state.tx.us/idcu/disease/IAPM/>

Laboratory

DSHS Austin laboratory

Providers voluntarily submit specimens to the DSHS Austin laboratory for influenza PCR testing throughout the season. Providers sign up for this program through their local health departments.

Laboratory Response Network (LRN) laboratories

Providers voluntarily submit specimens to one of the 9 Texas LRNs for influenza PCR testing throughout the season. Providers sign up for this program through their local health departments.

NREVSS

Laboratories voluntarily report influenza and other respiratory virus data weekly through the CDC's online NREVSS reporting system. **Laboratories sign up for this program by contacting DSHS.** <http://www.cdc.gov/surveillance/nrevss/>

Recommended Resources

Texas Department of State Health Services

DSHS influenza page: <http://www.texasflu.org/>

Influenza surveillance data and reports: <http://www.dshs.state.tx.us/idcu/disease/influenza/surveillance/>

Map of Texas Health Service Regions: <http://www.dshs.state.tx.us/regions/state.shtm>

Centers for Disease Control and Prevention

National FluView weekly flu report: <http://www.cdc.gov/flu/weekly/>

Variant influenza viruses: <http://www.cdc.gov/flu/swineflu/variant.htm>

Avian influenza viruses: <http://www.cdc.gov/flu/avianflu/index.htm>

Swine influenza viruses: <http://www.cdc.gov/flu/swineflu/index.htm>

Infection Control in Healthcare Facilities: <http://www.cdc.gov/flu/professionals/infectioncontrol/>

Seasonal Flu Information for Schools and Childcare Providers: <http://www.cdc.gov/flu/school/index.htm>

World Health Organization

Influenza page: <http://www.who.int/topics/influenza/en/>

Disease Outbreak News: <http://www.who.int/csr/don/en/>