

Surveillance[En Español](#)Influenza
(Flu)

ICD-9 487; ICD-10 J10,11

Related Topics: [Protecting Yourself During the Cold and Flu Season](#), [Avian Flu](#), [Vaccine Preventable Diseases and SARS](#)**2008 - 2009 Texas Influenza Surveillance Information****Influenza Surveillance Report for MMWR Week 16**

The influenza (flu) activity level for Texas for the week ending April 25, 2009 was "local." During week 16, no specimens tested by NREVSS laboratories in Texas were positive for influenza. The percentage of visits for influenza-like illness as reported by ILINet providers in Texas was below the regional baseline.

Reports from Health Service Regions

Reports were received from all Health Service Regions (HSRs) for week 16; however, due to the current swine influenza A/H1N1 investigations, regular reports from many sentinel providers were not received by the HSRs. HSR 4/5N reported an increased level of flu activity compared to week 15. HSRs 6/5S and 8 reported the same level of flu activity compared to week 15. All other HSRs reported a decreased level of flu activity compared to week 15. For a map of Health Service Regions, please visit the following website:

<http://www.dshs.state.tx.us/regions/state.shtm>

Laboratory Results

During week 16, five hospital laboratories and public health agencies across Texas reported conducting a total of 138 influenza tests (antigen, culture, and PCR) to the National Respiratory and Enteric Virus Surveillance System (NREVSS) sponsored by the Centers for Disease Control and Prevention (CDC). No tests were positive for influenza.

A total of 12 reports of PCR- or culture-confirmed influenza were received from public health laboratories and the United States Air Force School of Aerospace Medicine (USAFSAM) for the following counties during week 16 (April 19-April 25):

Influenza A/H1 (seasonal)	Influenza A/H3	Influenza A/not subtyped	Influenza B
Bexar County (2)	(none)	(none)	Bexar County (3)
Travis County			Wichita County (5)
Wichita County			

Positive point-of-care rapid tests for influenza were reported by providers throughout the state (see county map below).

Novel Influenza A Virus Infections (information updated 5/15/09)

A total of 52 cases of influenza A/H1 swine confirmed by the CDC have been reported with a known onset in week 16 (April 19-April 25) for the following counties (listed by patient county of residence):

Influenza A/H1 swine

Bexar County (5)
 Cameron County
 Comal County (2)
 Dallas County (4)
 Denton County
 Fort Bend County (2)
 Guadalupe County (10)
 Harris County (3)
 Hidalgo County
 Jefferson County
 Johnson County
 Kendall County
 Montgomery County
 Starr County (5)
 Tarrant County (11)
 Taylor County
 Travis County
 Upshur County

Additional specimens have been identified by PCR testing as positive for unsubtypeable influenza A; these specimens are being forwarded to CDC for further study. This information is subject to change as more reports are received. Thorough case and contact investigations are ongoing, and the number of confirmed cases changes frequently. Please see the DSHS website (<http://www.dshs.state.tx.us/swineflu/default.shtm>) and the CDC website (<http://www.cdc.gov/flu/swine/>) for more information on the current investigation.

Antigenic Characterization

CDC has reported antigenic characterization results from 48 influenza isolates [20 influenza A/H1, 6 influenza A/H3, and 22 influenza B viruses] received from the DSHS Laboratory since the beginning of the 2008-09 flu season.

Influenza A/H1 [20]

- All 20 viruses were characterized as A/Brisbane/59/2007, the influenza A/H1 component of the 2008-09 influenza vaccine for the Northern Hemisphere.

Influenza A/H3 [6]

- All 6 viruses were characterized as A/Brisbane/10/2007, the influenza A/H3 component of the 2008-09 influenza vaccine for the Northern Hemisphere.

Influenza B (B/Victoria/02/87 and B/Yamagata/16/88 lineages) [22]

Victoria lineage [15]

- Fifteen of the influenza B viruses were characterized as belonging to the B/Victoria lineage.

Yamagata lineage [7]

- Seven viruses were characterized as B/Florida/4/2006, the influenza B component for the 2008-09 influenza vaccine for the Northern Hemisphere.

Antiviral Resistance

Since September 28, 2008, 21 seasonal influenza A/H1 isolates, 6 influenza A/H3 isolates, and 21 influenza B isolates from the DSHS laboratory have been tested by CDC for antiviral resistance.

	Isolates Tested (n)	Resistant Viruses, Number (%)		Isolates Tested (n)	Resistant Viruses, Number (%)
		Oseltamivir	Zanamivir		Adamantanes
Influenza A/H1	21	21 (100%)	0 (0)	21	0 (0)
Influenza A/H3	6	0 (0)	0 (0)	6	6 (100%)
Influenza B	21	0 (0)	0 (0)	N/A*	N/A*

*Adamantanes are not effective against influenza B viruses.

CDC has issued interim recommendations for use of antiviral medications in the 2008-09 influenza season. Those recommendations are available at: <http://www.cdc.gov/flu/professionals/antivirals/index.htm>.

Influenza-Associated Pediatric Mortality

No influenza-associated pediatric fatalities in Texas residents were reported during week 16. Texas has reported ten influenza-associated pediatric fatalities during the 2008-09 influenza season.

School Closures and Institutional Outbreaks

School closures were reported in HSR 8 (Guadalupe County) during week 16. For more information on school closures, please see <http://ritter.tea.state.tx.us/swineflu/schclosings.html>.

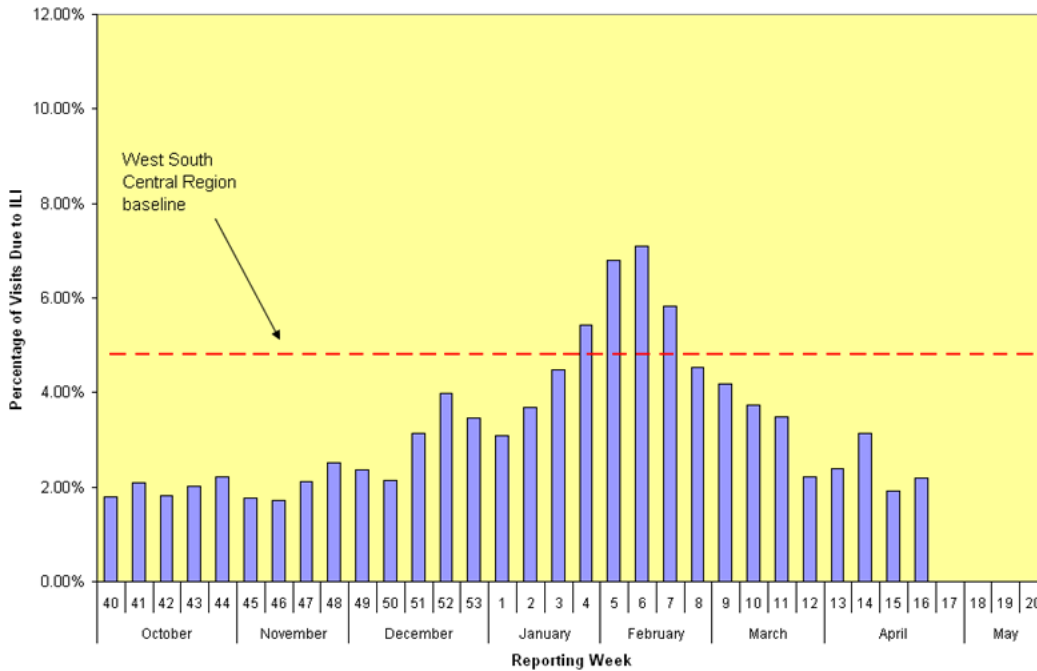
U.S. Outpatient Influenza-like Illness Surveillance Network

Sixty-four providers in Texas reported data to the U.S. Outpatient Influenza-like Illness Surveillance Network (ILINet) (formerly known as the U.S. Influenza Sentinel Provider Surveillance System) on patients with influenza-like illness (ILI) and total patients seen for any reason during week 16. Of the 62 providers who reported seeing patients during week 16, 22 (35%) saw at least one patient with ILI. Of all patient visits during this week, 2.19% were due to ILI. The ILI baseline for the West South Central Region (Arkansas, Louisiana, Oklahoma, and Texas) of the United States is 4.8% for the 2008-2009 season. The baseline is the mean percentage of patient visits for ILI during non-influenza weeks for the previous three seasons plus two standard deviations.

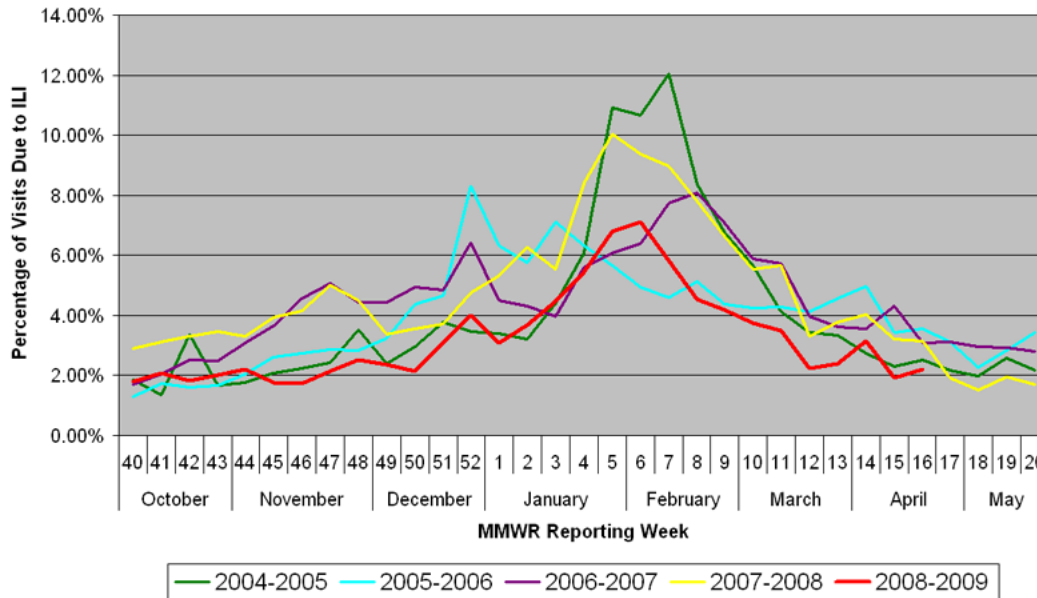
Week	# Reporting	Age 0-4	Age 5-24	Age 25-64	Age over 64	Total ILI	Total Patients	% ILI
2008-40	78	84	133	127	22	366	20333	1.80
2008-41	78	114	163	124	19	420	20105	2.09
2008-42	79	107	156	90	7	360	19746	1.82
2008-43	79	120	152	106	20	398	19740	2.02
2008-44	81	136	199	104	26	465	20972	2.23
2008-45	78	110	111	122	27	370	20835	1.78
2008-46	73	110	106	103	23	342	19771	1.73
2008-47	75	137	143	122	19	421	19806	2.13
2008-48	79	131	132	125	37	425	16905	2.51
2008-49	77	143	159	153	24	479	20343	2.35
2008-50	75	133	146	108	28	415	19330	2.15
2008-51	69	172	177	175	24	548	17531	3.13
2008-52	76	194	153	154	34	535	13431	3.98
2008-53	77	176	141	165	46	528	15222	3.47
2009-01	78	162	182	188	38	570	18518	3.08
2009-02	77	178	287	235	41	741	20094	3.69
2009-03	78	174	468	341	43	1026	22951	4.47
2009-04	78	260	679	332	47	1318	24244	5.44
2009-05	73	282	883	465	40	1670	24590	6.79
2009-06	79	301	964	391	59	1715	24162	7.10
2009-07	79	320	814	316	57	1507	25873	5.82
2009-08	73	221	552	283	57	1113	24526	4.54
2009-09	76	194	422	244	71	931	22293	4.18
2009-10	79	221	324	212	77	834	22341	3.73

2009-11	75	167	268	178	58	671	19207	3.49
2009-12	70	109	150	179	18	456	20542	2.22
2009-13	69	114	141	163	16	434	18183	2.39
2009-14	75	158	194	232	51	635	20188	3.15
2009-15	68	86	129	144	19	378	19770	1.91
2009-16	64	84	152	154	25	415	18922	2.19

Percentage of Visits Due to Influenza-Like Illness (ILI),
Texas Providers in the U.S. Outpatient Influenza-like Illness Surveillance Network,
2008–2009



Influenza-Like Illness (ILI) Data
Texas Providers in the U.S. Outpatient Influenza-like Illness Surveillance Network
Flu Seasons 2004–2009

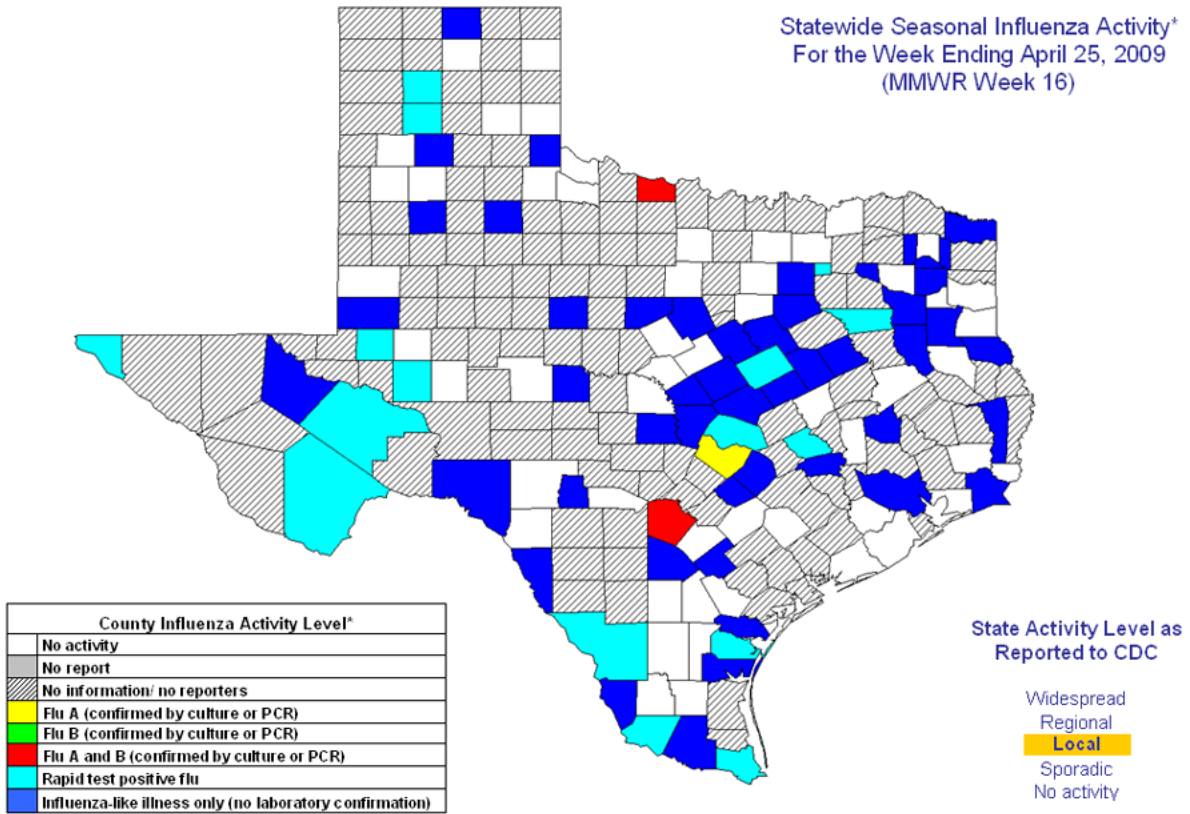


National Influenza Activity Map

The current U.S. flu weekly report may be found at <http://www.cdc.gov/flu/weekly/fluactivity.htm>.

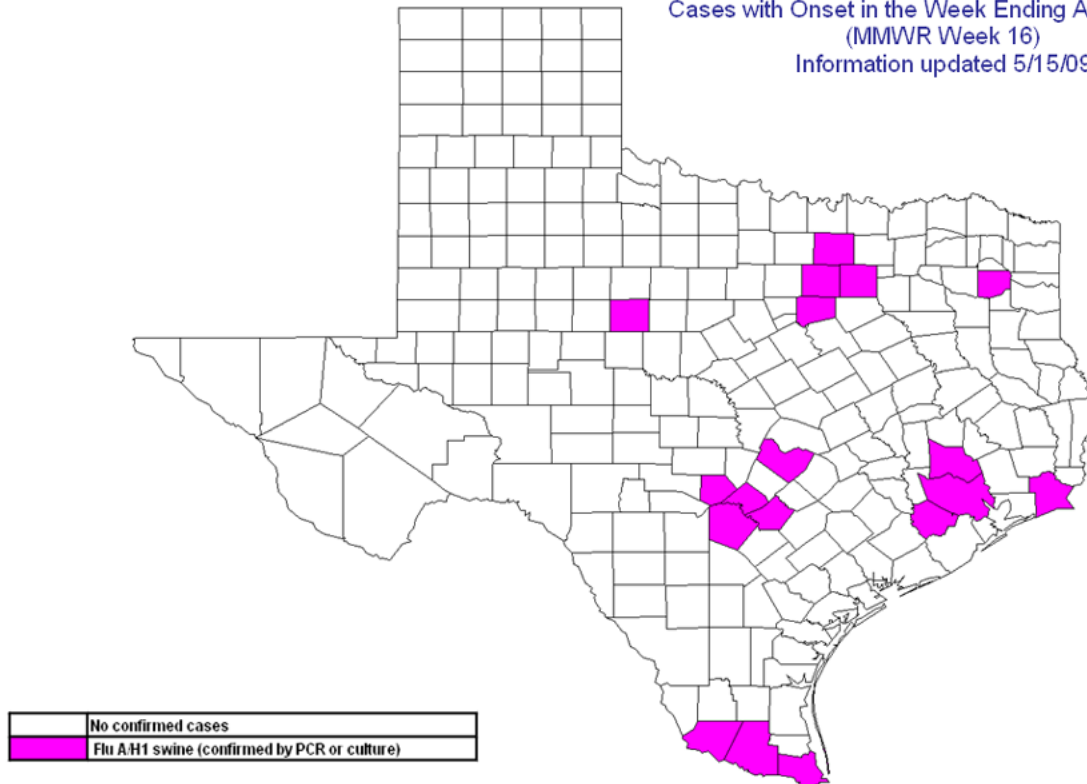
For more information on flu surveillance activities in the State of Texas, please visit our main [surveillance](#) page.

Statewide Seasonal Influenza Activity*
For the Week Ending April 25, 2009
(MMWR Week 16)



*Influenza activity level corresponds to current MMWR week only and does not reflect previous weeks' activity.

Counties with Confirmed Influenza A/H1N1 Swine
Cases with Onset in the Week Ending April 25, 2009
(MMWR Week 16)
Information updated 5/15/09



Last Updated: Monday, May 04, 2009

Texas Department of State Health Services - Infectious Disease Control Unit
1100 West 49th Street, Suite T801, Mail Code: 1960 PO BOX 149347 - Austin, TX 78714-9347
(512) 458-7676 - Fax: (512) 458-7616 - E-Mail

[Topics A-Z / Site Map](#)